

Living Archive Reference Map 009

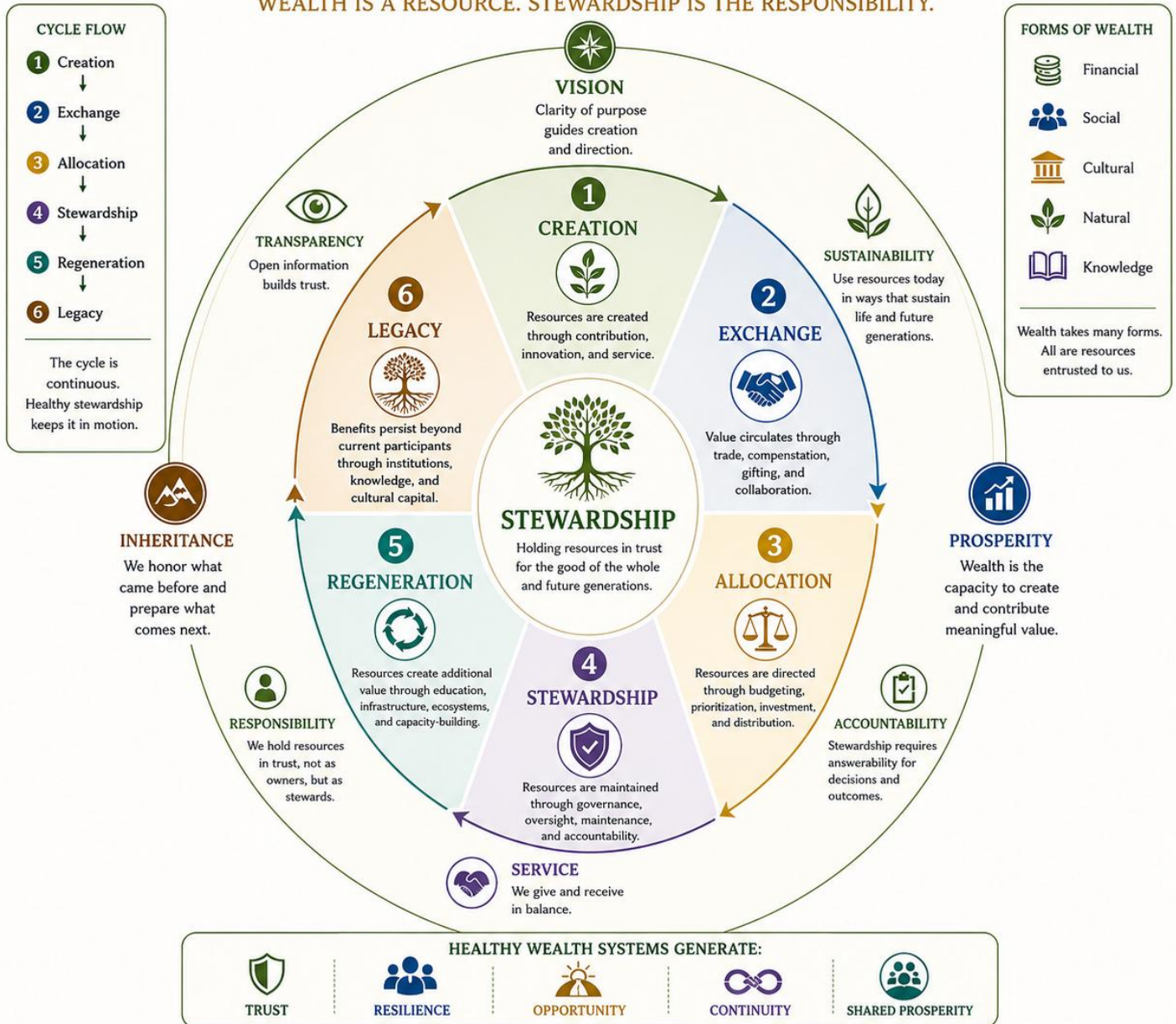
The Wealth Stewardship Cycle

Wealth is a Resource. Stewardship is the Responsibility

LIVING ARCHIVE REFERENCE MAP 009

THE WEALTH STEWARDSHIP CYCLE

WEALTH IS A RESOURCE. STEWARDSHIP IS THE RESPONSIBILITY.



Wealth grows when it circulates with purpose. Stewardship ensures it serves life, now and in the future.

© 2025–2026 Gerald Alba Daquila · Living Archive · Stewardship in Action

The Wealth Stewardship Cycle. A framework illustrating how resources move through creation, exchange, allocation, stewardship, regeneration, and legacy. The model emphasizes wealth as a form of entrusted resource—financial, social,

cultural, natural, and knowledge-based—whose long-term value depends on responsible circulation, renewal, and intergenerational continuity.

Visual Description

A circular systems map illustrating wealth as a regenerative cycle of stewardship rather than a process of accumulation. At the center is Stewardship, representing the responsibility to direct resources in ways that support long-term wellbeing, resilience, and continuity.

Surrounding the center is a six-stage cycle consisting of Creation, Exchange, Allocation, Stewardship, Regeneration, and Legacy. Together these stages illustrate how value is generated, circulated, directed, maintained, renewed, and passed forward across generations.

An outer stewardship ring highlights the qualities required for healthy resource flows, including transparency, responsibility, participation, reciprocity, sustainability, and accountability. These qualities support trust and prevent the distortions that emerge when wealth becomes disconnected from stewardship.

The map emphasizes that healthy wealth systems are not measured solely by accumulation, but by their capacity to generate resilience, opportunity, continuity, and shared prosperity over time.

Framework Note

This map should be understood as an orienting framework rather than a financial formula. Wealth may take many forms—including financial, social, cultural, ecological, and knowledge capital. The purpose of the framework is to support reflection on how resources are created, exchanged, stewarded, regenerated, and transferred across individuals, communities, institutions, and generations. It emphasizes long-term continuity and responsible participation rather than short-term accumulation alone.

Living Archive Reference Map 009
The Wealth Stewardship Cycle
Wealth is the Resource. Stewardship is the Responsibility

*Created by Gerald Daquila
Living Archive Project*

Reality • Perception • Interpretation • Meaning • Decision • Action • Feedback • Sensemaking • Stewardship • Leadership • Governance • Human Development

© Gerald Daquila. Shared for educational, personal, and non-commercial use.

Life. Understood. www.geralddaquila.com