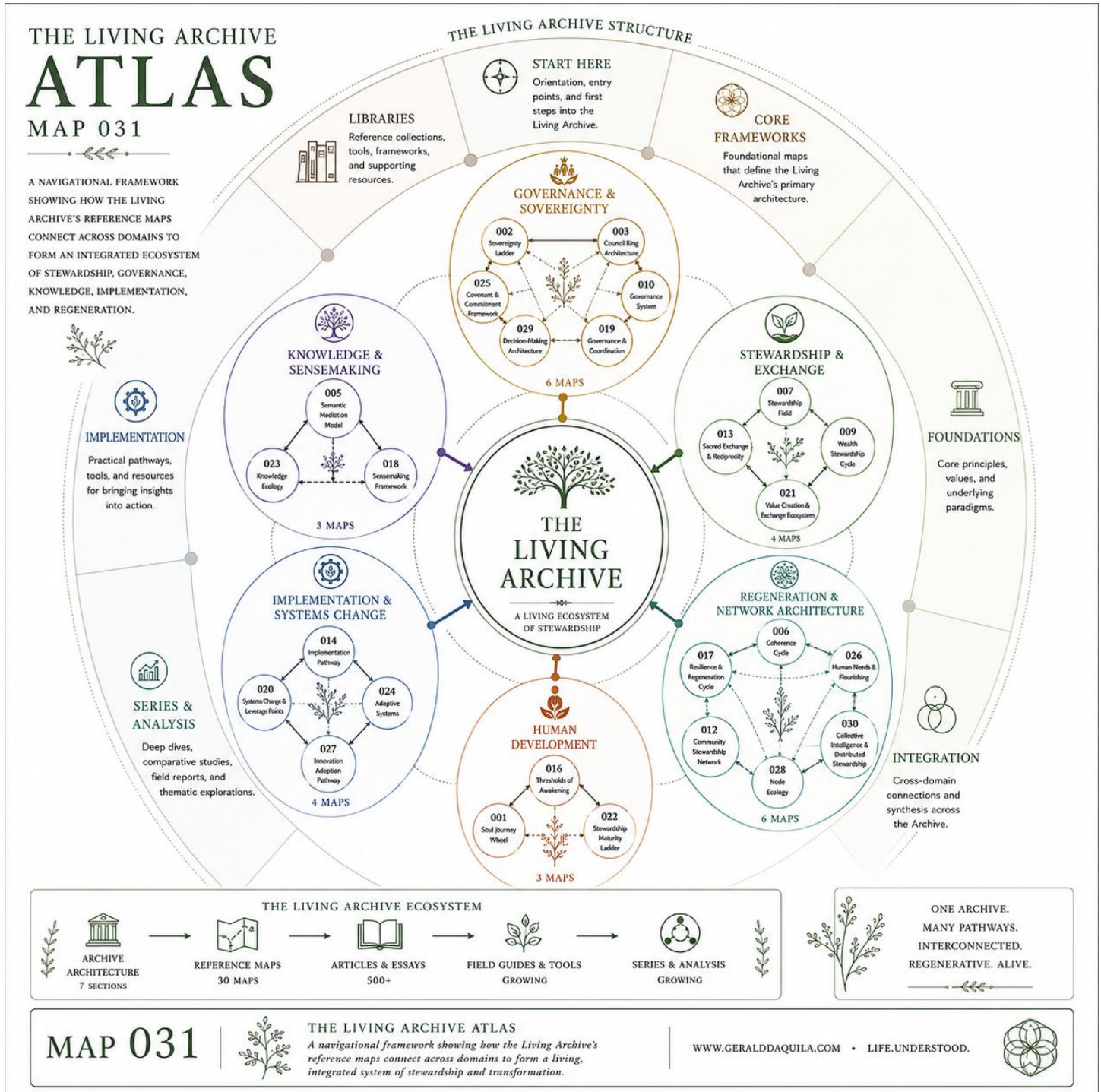


Living Archive Reference Map 031

The Living Archive Atlas

How Reference Maps, Knowledge Domains, and Archive Pathways Form an Integrated Ecosystem



The Living Archive Atlas. A navigational framework illustrating how the Living Archive's reference maps connect across domains of human development, governance, stewardship, knowledge, implementation, and regeneration. The atlas demonstrates that individual frameworks gain greater meaning when understood as part of a larger ecosystem of

relationships, pathways, and supporting resources. By revealing how maps, articles, field guides, and thematic collections interact, the framework provides orientation for exploring the broader Living Archive.

Visual Description

The Living Archive Atlas is a navigational framework designed to show how the Living Archive's thirty reference maps relate to one another within a unified knowledge ecosystem. The framework presents the archive as an interconnected landscape in which domains, maps, resources, and learning pathways support one another while contributing to a larger body of stewardship knowledge.

At the center of the framework is The Living Archive, representing the living body of knowledge that integrates the archive's various domains, maps, essays, guides, and implementation resources. Surrounding the center are six primary domains: Human Development, Governance & Sovereignty, Stewardship & Exchange, Regeneration & Network Architecture, Implementation & Systems Change, and Knowledge & Sensemaking.

Each domain contains a cluster of reference maps that explore a specific area of inquiry while remaining connected to the wider ecosystem. Together these clusters illustrate how individual frameworks contribute to larger patterns of understanding and action.

Encircling the domain layer is the Living Archive Structure, which identifies the archive's primary navigation pathways: Start Here, Core Frameworks, Foundations, Integration, Series & Analysis, Implementation, and Libraries. These sections provide multiple entry points through which readers can explore the archive according to their interests, needs, and level of familiarity.

Supporting the framework is the Living Archive Ecosystem pathway, illustrating how archive architecture gives rise to reference maps, which in turn support articles and essays, field guides and tools, and thematic series and analysis. This progression demonstrates how ideas move from conceptual frameworks into practical resources and deeper exploration.

The overall structure emphasizes that the archive is not a collection of isolated works but a living ecosystem in which domains, frameworks, and resources continually reinforce and inform one another.

Framework Note

This map should be understood as an orienting framework for navigating the Living Archive rather than as a comprehensive representation of every relationship contained within it. The framework highlights how knowledge domains, reference maps, archive pathways, and supporting resources connect within a larger ecosystem of stewardship and understanding. Its central premise is that meaningful learning emerges through orientation, context, and relationship rather than through isolated information alone. By providing a visual overview of the archive's structure, the atlas supports exploration, integration, and long-term engagement with the broader body of work.

Living Archive Reference Map 031

The Living Archive Atlas

How Reference Maps, Knowledge Domains, and Archive Pathways Form an Integrated Ecosystem

Created by Gerald Daquila
Living Archive Project

Human Development • Governance • Stewardship • Knowledge • Implementation • Regeneration • Integration • Sensemaking • Networks • Learning Pathways • Living Systems

© Gerald Daquila. Shared for educational, personal, and non-commercial use.

Life.Understood. www.geralddaquila.com