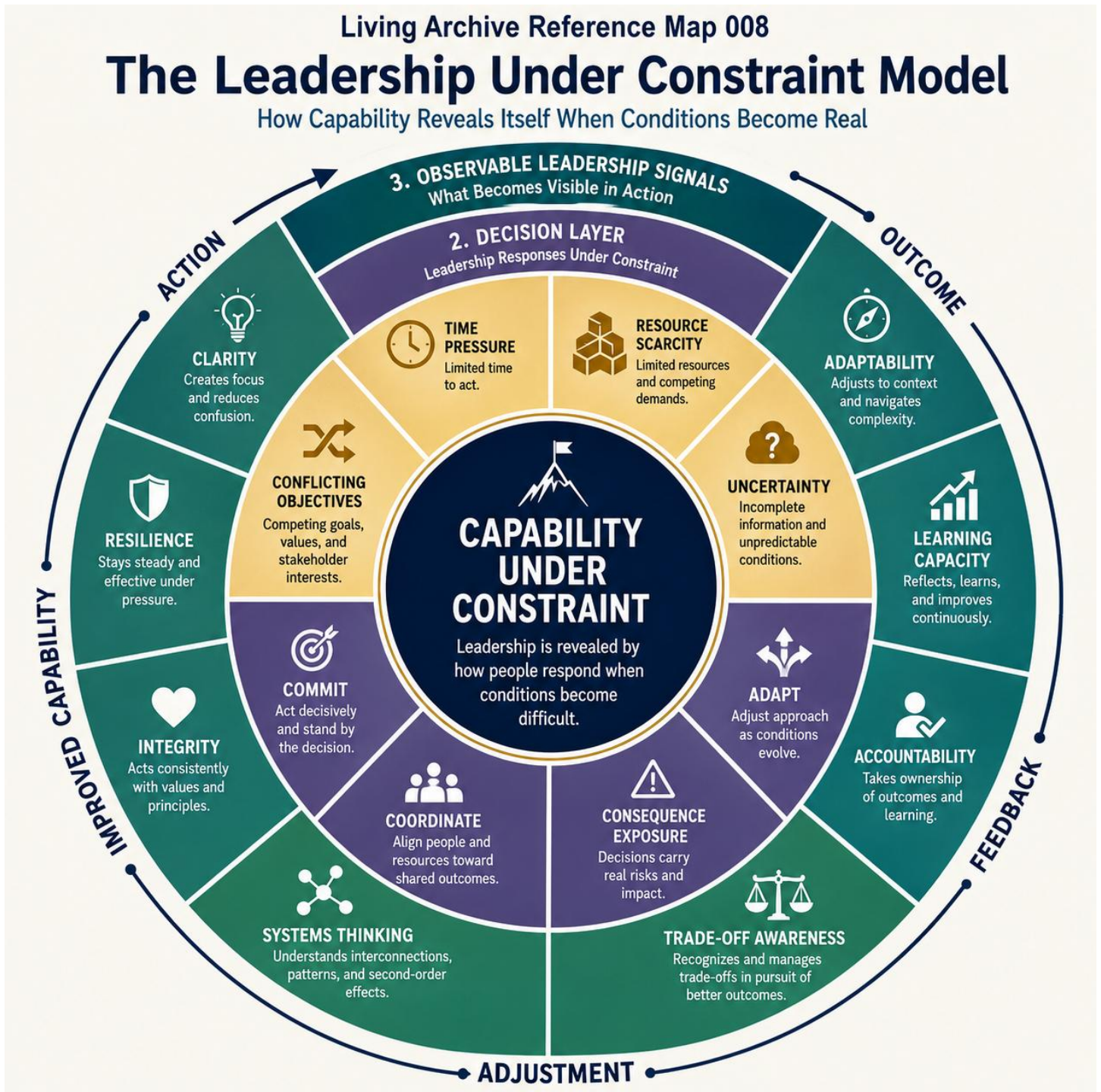


Living Archive Reference Map 008

Leadership Under Constraint Model

Capability Revealed When Constraints Become Real



The Leadership Under Constraint Model. A framework illustrating how capability becomes visible when individuals operate under realistic conditions. The model shows how constraints such as time pressure, resource scarcity, uncertainty, information gaps, conflicting objectives, and consequence exposure shape decision-making behavior. Through repeated cycles of action, outcome, feedback, reflection, and adaptation, observable capability signals emerge—including clarity,

resilience, integrity, systems thinking, trade-off awareness, accountability, learning capacity, and adaptability. Rather than measuring what people know or claim, the model emphasizes how real capability reveals itself through decisions and behavior under constraint.

Visual Description

A circular systems map illustrating how leadership capability becomes visible when individuals operate under realistic conditions and meaningful constraints. At the center is **Capability Under Constraint**, representing the principle that true capability is revealed not through stated intentions, credentials, or theoretical knowledge, but through decisions and behavior when conditions become difficult.

The first ring presents the **Constraint Layer**, highlighting the forces that make leadership visible in practice. These include time pressure, resource scarcity, uncertainty, information gaps, conflicting objectives, and consequence exposure. Rather than being obstacles to leadership, these conditions function as revealing mechanisms that expose how individuals think, prioritize, adapt, and respond when outcomes matter.

The second ring represents the **Decision Layer**, where leadership responses emerge under constraint. The model identifies four recurring decision functions: prioritizing what matters most, judging among competing options, coordinating people and resources, and communicating clearly under pressure. These functions translate conditions into action and determine how individuals navigate complexity and uncertainty.

The outer ring illustrates **Observable Capability Signals**—the patterns that become visible through repeated decisions and actions. These include clarity, resilience, integrity, systems thinking, trade-off awareness, accountability, learning capacity, and adaptability. Together, these signals provide a more complete picture of capability than traditional measures based solely on credentials, experience, interviews, or self-reporting.

Surrounding the model is a continuous feedback cycle linking action, outcome, feedback, reflection, adaptation, and improved capability. This reinforces the principle that leadership capability develops through interaction with real conditions rather than through knowledge acquisition alone.

The map is intended as an orienting framework for leadership development, simulation-based learning, capability assessment, and systems-oriented evaluation. It emphasizes that capability is best understood through observable behavior under realistic conditions rather than through abstract descriptions of competence.

Framework Note

This map should be understood as an orienting framework rather than a prescriptive formula. Leadership capability rarely emerges under ideal conditions. Instead, it becomes visible through the interaction between constraints, decisions, actions, and feedback. The model is intended to support reflection, learning, simulation design, and capability assessment by focusing attention on how individuals respond when conditions become complex, uncertain, and consequential.

Living Archive Reference Map 008 Leadership Under Constraint Model Capability Revealed When Constraints Become Real

Created by Gerald Daquila

Living Archive Project

Reality • Perception • Interpretation • Meaning • Decision • Action • Feedback • Sensemaking • Stewardship • Leadership • Governance • Human Development

© Gerald Daquila. Shared for educational, personal, and non-commercial use.

Life Understood. www.geralddaquila.com